

ASHEVILLE AREA CHAMBER OF COMMERCE

ASHEVILLE METRO AREA



AEROSPACE

INDUSTRY



570+ companies manufacture products in the four-county Asheville MSA, including a diversity of aerospace products, like engine components, engine composites, avionics, and more.



SCAN QR CODE
for more on the
Aerospace Industry
in Asheville, NC



AEROSPACE INDUSTRY FACTS

GROWTH RATE

Aircraft Engine and Engine Parts
Manufacturing Employment
(2017- 2022)

↑ **173%**

Asheville MSA

Source: Lightcast, NAICS 336412

ASHEVILLE REGIONAL AIRPORT (AVL)



ONE OF THE FASTEST-GROWING

small hub airports in the U.S.



29% INCREASE

in annual average passenger traffic
from 2021-2022



90 ACRES

available for development at the AVL Airport

AS OF JANUARY 1, 2023, NORTH CAROLINA CURRENTLY HAS THE
LOWEST CORPORATE INCOME TAX RATE IN THE COUNTRY AT **2.5%**

450+ Aerospace Suppliers

Over 450 establishments make up North Carolina's aerospace supply chain, including engineering, composite, textile, manufacturing, and MRO companies. Plus, North Carolina's aerospace manufacturing industry purchases 66% of its supply chain inputs from other businesses in the state.

— ECONOMIC DEVELOPMENT PARTNERSHIP OF NORTH CAROLINA, 2022



WORKFORCE DEVELOPMENT

POPULATION AGE 25+ WITH ASSOCIATE'S DEGREE OR HIGHER

59%

Asheville City

47%

Asheville MSA

43%

North Carolina

42%

United States

UNIVERSITY FACTS

ASHEVILLE MSA

Enrollment 2020: 16,691

Completions 2021: 3,772
(All completions & programs;)

UNIVERSITY HIGHLIGHTS

A-B Technical Community College

Blue Ridge Community College

Haywood Community College

Mars Hill University

Montreat College

University of North Carolina at Asheville

Warren Wilson College

Western Carolina University
(satellite location)

ADVANCED ENGINEERING PROGRAM

- The 2+2 Engineering program is offered jointly by NC State and UNC Asheville with disciplines that include Computer Engineering, Mechanical Engineering, Environmental Engineering, and more. Two years are completed at UNCA and two years at NCSU.
- UNCA and NCSU also jointly offer Mechatronics Engineering. All years are completed in Asheville.



▲ Photography: Courtesy of Pratt & Whitney

TRAINING PROGRAMS

A-B Tech's Advanced Manufacturing Center

AB-Tech's state-of-the-art manufacturing training center houses the college's Customized Training Programs for business and industry training, including:

- Composites Training Center of Excellence
in coordination with GE Aerospace
- Machining Training Center
in coordination with Pratt & Whitney

There is a broad consortium of five community colleges working together to support manufacturing training in the region.



▲ Photography: Courtesy of GE



GE Aviation



GO BEYOND



SPiRiT
AEROSYSTEMS



Collins Aerospace



HondaJet



LOCKHEED MARTIN



ROLLS
ROYCE



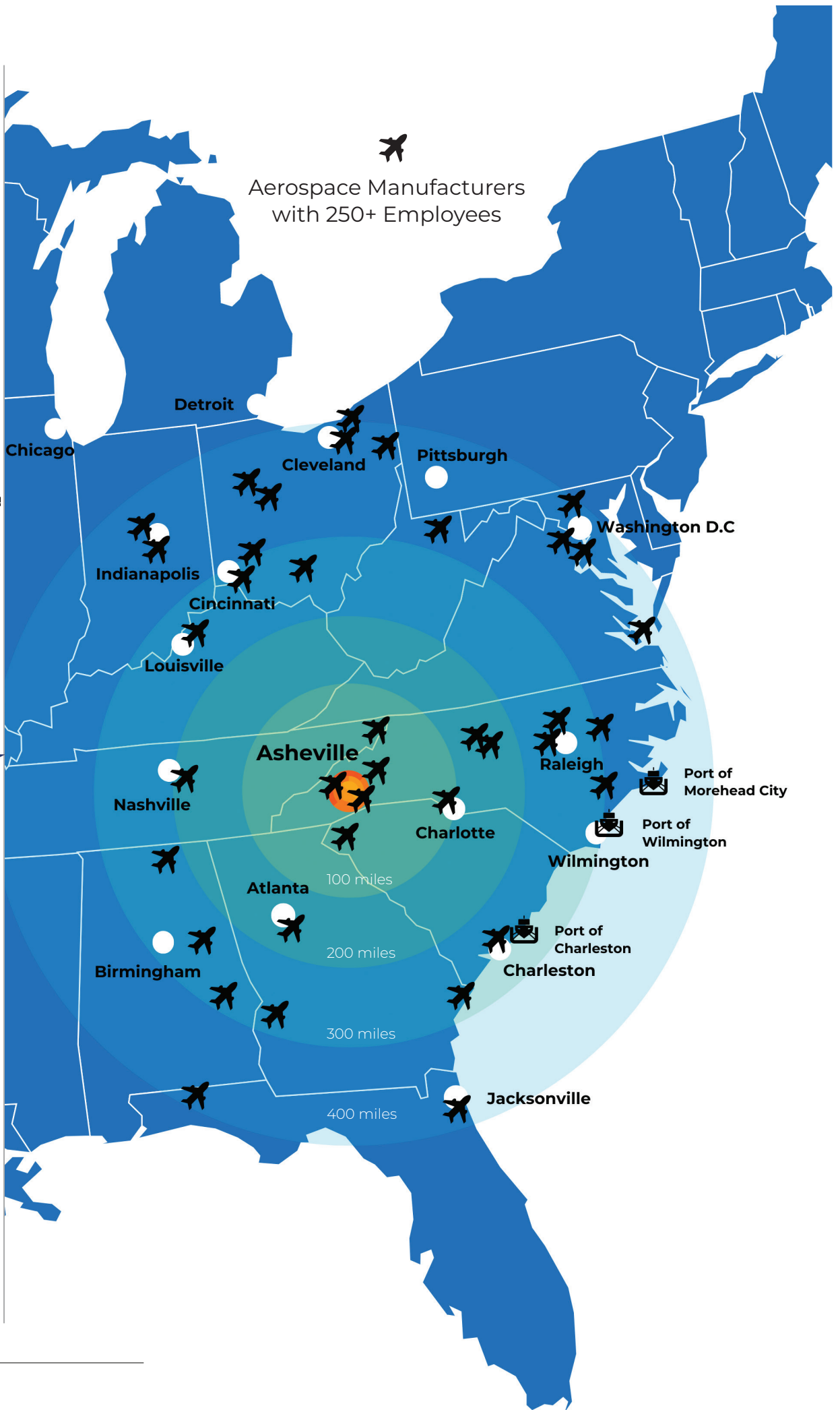
BOEING



NORTHROP
GRUMMAN

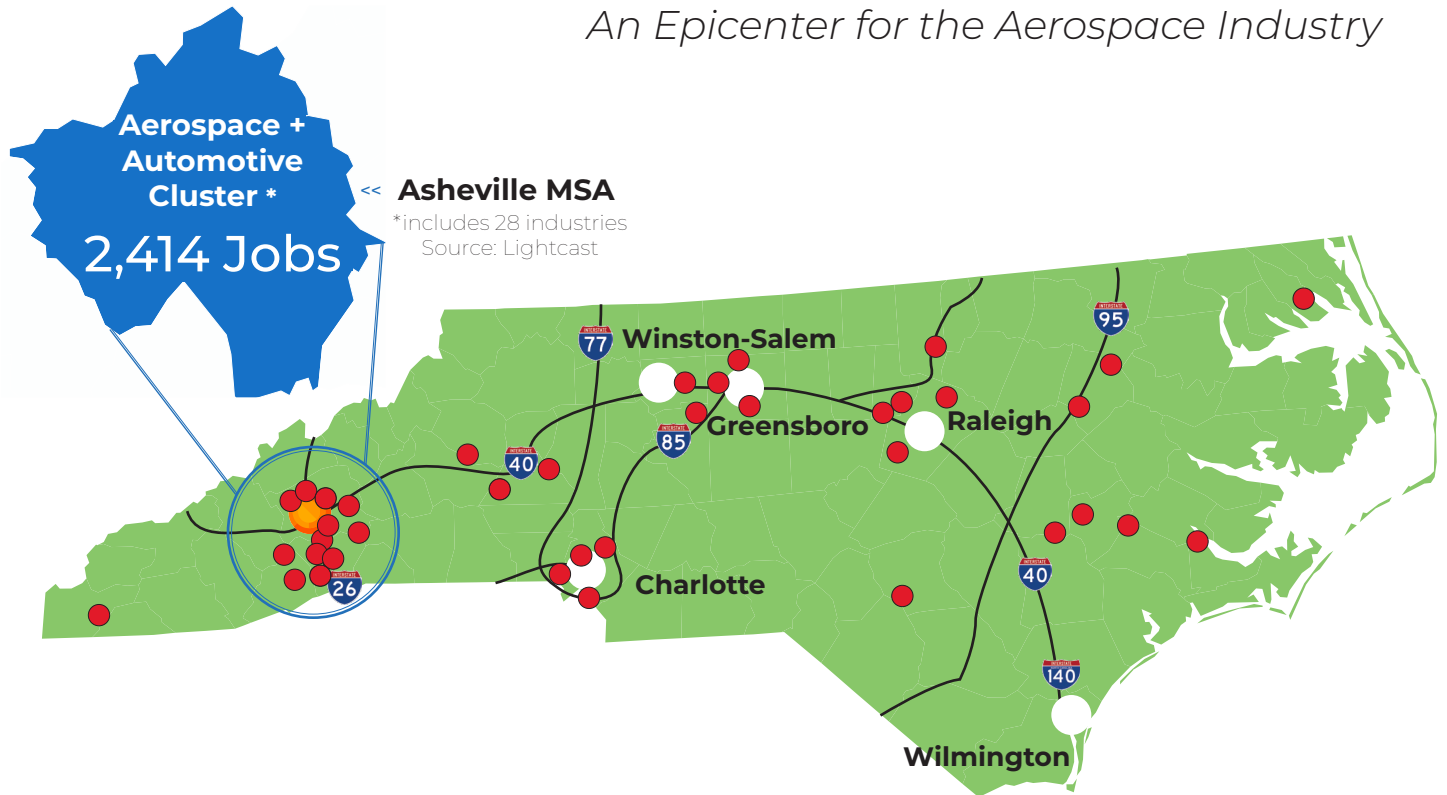


BOOM



ASHEVILLE NORTH CAROLINA

An Epicenter for the Aerospace Industry



AEROSPACE MANUFACTURERS IN NORTH CAROLINA

Select companies include:

AVL Technologies*

- BAE
- Boeing
- Boom
- Cessna Aircraft
- Curtiss-Wright Controls
- Collins Aerospace
- DRS Technologies
- Firstmark Aerospace

GE Aerospace*

- General Dynamics
- GKN Driveline

Haeco Americas

Haynes International*

- Honda Aircraft Co.
- Honeywell Associates
- Kearfott / Astronautics***
- Kidde Aerospace & Defense
- L3 Technologies
- Lockheed Martin
- LORD Corporation

Palmer Wahl Instruments*

Pratt & Whitney*

Mills Manufacturing*

Moog Components Group

Raytheon Technologies

Spirit Aerosystems, Inc.

Rolls-Royce Corp

Survival Innovations*

Standard Aero

TE Connectivity*

Telair U.S. Cargo Systems

Vx Aerospace

ZF Chassis Components LLC

*** Asheville MSA Manufacturer**

PRATT & WHITNEY



■ The Asheville Plant will support the GTF engine platform. With its revolutionary geared turbo fan technology, it is transforming aviation by delivering game-changing performance including a **16%** reduction in fuel consumption, a **75%** reduction in noise footprint and a **50%** reduction in NOx emissions.



■ Pratt & Whitney is pursuing LEED silver certification for the **\$650 Million** facility in what will be one of the largest LEED certified manufacturing sites in the South. The standards of the US Green Building Council are recognized globally for best practices in healthy, high efficiency, sustainable building.

■ The Asheville Plant is designed for zero-discharge of industrial wastewater with company-wide goals to reduce water consumption, emissions and waste to landfill **10%** by 2025.

▲ Photography: Courtesy of Pratt & Whitney



<< Photography: Courtesy of Pratt & Whitney



FORTUNE 50 AEROSPACE COMPANY PRATT & WHITNEY OPENS NEW ASHEVILLE OPERATIONS

^ Photography: Courtesy of Pratt & Whitney

NOVEMBER 16, 2022

North Carolina Gov. Roy Cooper, Sec. of Commerce Machel Sanders and local dignitaries joined Pratt & Whitney and Raytheon leadership for the official ribbon cutting at the company's Advanced Turbine Airfoil Manufacturing facility in South Buncombe County. Shane Eddy, president of Pratt & Whitney, shared the importance of the Asheville investment, saying "This new production facility will form the cornerstone of our industrial transformation and is a key investment to address the demand for civil and military engines."

Turbine airfoils are a critical component across the Pratt & Whitney engine portfolio and the investment will continue to modernize and transform operations with cutting-edge technologies as the aviation and aerospace market continues its strong recovery. The \$650 million plant will employ more than 800 residents by 2027 at average wages exceeding \$68,400. With the successful launch of the North Carolina

Community College Pratt & Whitney Pre-Hire Training Program across 5 regional campuses, the company is exceeding the forecasted pace for both investment and employment in their newest flagship location.

At full buildout, the world-class facility will reach 1.2 million square feet in size as the centerpiece of a 900-acre technology and research park in South Asheville known as Biltmore Park West. Situated on I-26, with dramatic views of the Blue Ridge Mountain landscape and easy proximity to Downtown Asheville, Asheville Regional Airport (AVL) and nearby Greenville Spartanburg International Airport (GSP), Biltmore Park West is emerging as the South's newest premier destination for Advanced Aerospace Manufacturing. North Carolina's growing reputation as an aerospace market and standing as "First in Flight" appears secure for the next generation.

GE AEROSPACE 50 YEARS & GROWING



Scan the QR Code to learn why GE Aerospace chose Asheville to produce their critical CMC components that will revolutionize the future of flight.

“We are very pleased to continue expanding our GE Aerospace business in Asheville and continue to build on a great workforce, culture and community of Western North Carolina. This merging of technology and a strong, creative workforce is the foundation of our success.”

— MICHAEL MEGUIAR
Asheville Plant Leader, GE Aerospace (2018)

GE Aerospace is a world-leading provider of jet and turboprop engines, components, and integrated systems for aircraft with a workforce of over 400 in Asheville. In 2013 and 2018 the company invested **\$230,000,000** in its Asheville facility to become the regional center of manufacturing Ceramic Matrix Composites (CMC). CMCs are used in jets and engines, replacing traditional components and materials to provide greater resistance to high temperatures and corrosion. In addition, CMCs provide faster and lighter capabilities to aircraft.

^ Photography: Courtesy of GE Aviation

MAJOR AEROSPACE EMPLOYERS IN THE METRO AREA



Mills Manufacturing is a global leader in manufacturing military parachute systems and components for over 75 years.



Survival Innovations, LLC
Specializing in Human Protective Equipment

Survival Innovations LLC provides design and development services for customers in the aviation life support industry.



TE Connectivity designs and manufactures products at the heart of electronic connections for the automotive, aerospace, and defense industries. In 2013, the Asheville facility expanded by 90 new positions, investing in global production and engineering capabilities.



A division of Astronautics Corporation of America and a leader in the production of high precision guidance, navigation, and control applications. Kearfott's Motion Systems Division manufactures sophisticated precision rotary components, actuators, electronics, and stabilized sights in Asheville.



Palmer Wahl Instrumental Group is America's first manufacturer of precision industrial temperature and pressure instrumentation, founded in 1836.

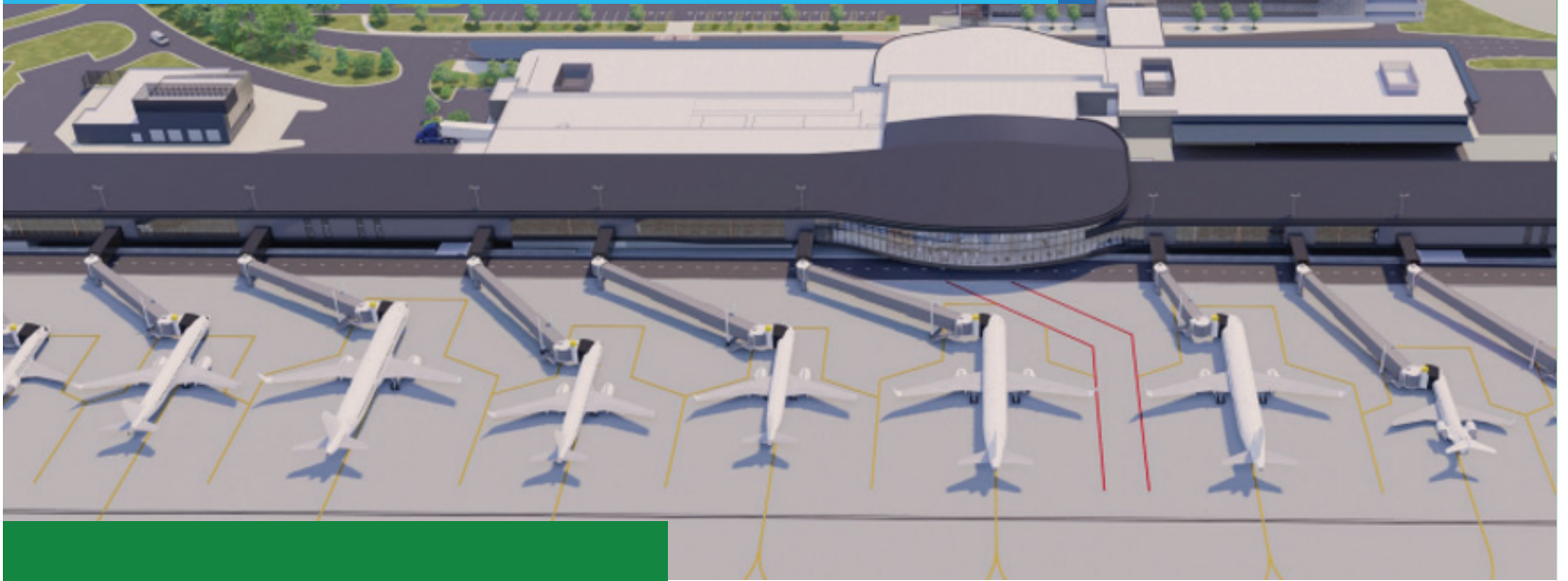


Established in 1994, AvL Technologies, Inc. specializes in the design, development and production of mobile satellite antennas and positioner systems.



Haynes International is one of the world's largest developers, manufacturers, and distributors of high-performance nickel- and cobalt-based alloys for use in high-temperature and corrosion applications.

MAJOR AIRPORT TERMINAL EXPANSION UNDERWAY



MODERN & EXPANDING INFRASTRUCTURE

- New runway completed in 2020, opening new aeronautical development opportunities on the west side of the airfield.
- Runway length - 8,001 ft.
- Significant customer parking added in the past 5 years, including a 1,300 space parking garage and a 300+ space remote shuttle lot.
- New \$275 Million airport terminal under construction. The new terminal will be twice the size of the current airport, with 12 gates, expanded tenant space and more aircraft parking to accommodate current and future growth.

GRAND LOBBY



» CONNECTED

The Asheville Regional Airport is accessible to:

Downtown Asheville - 15 miles

Greenville, SC - 48 miles

Inland Port Greer - 51 miles

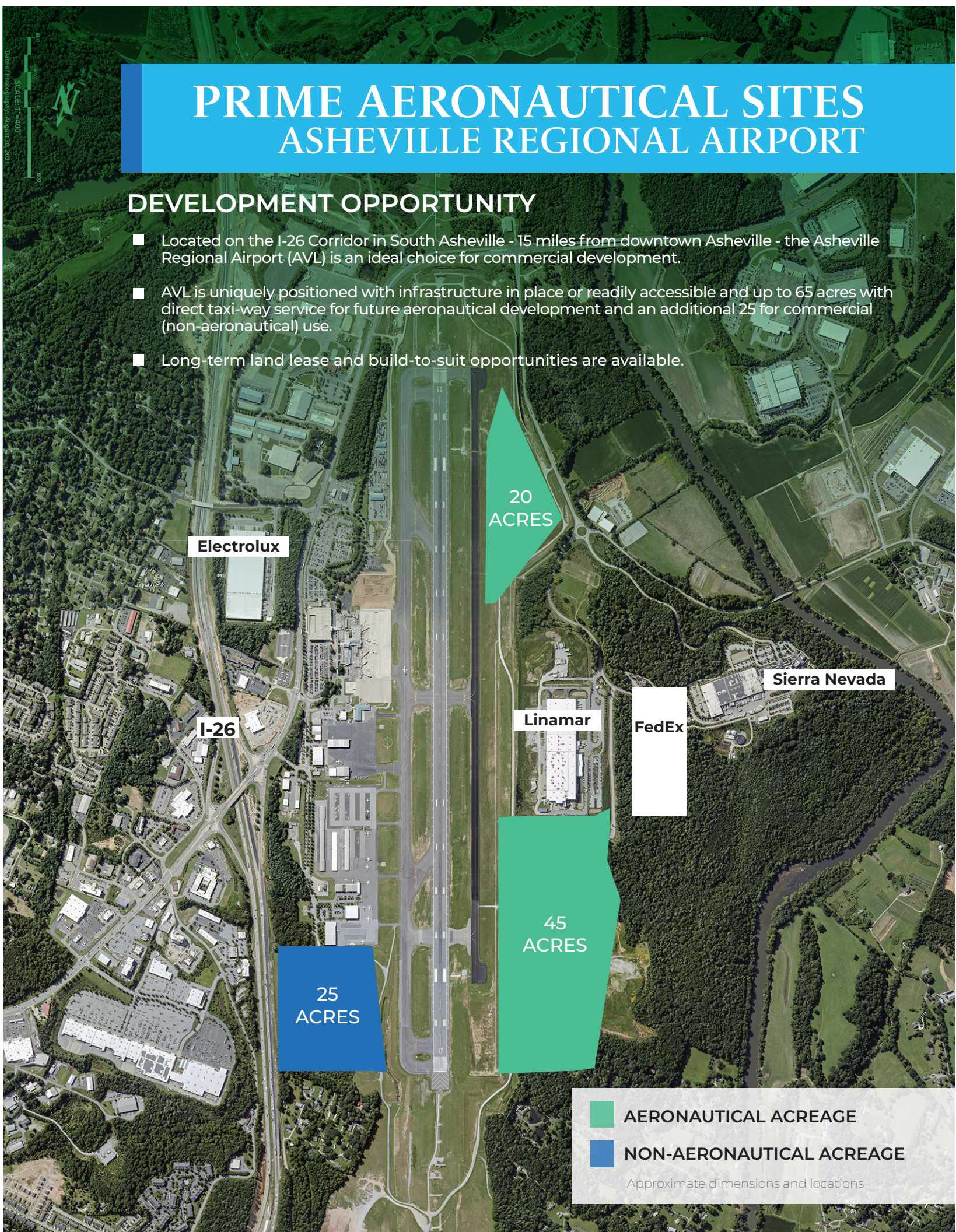
Charlotte Inland Port - 107 miles

Port of Charleston - 253 miles

PRIME AERONAUTICAL SITES ASHEVILLE REGIONAL AIRPORT

DEVELOPMENT OPPORTUNITY

- Located on the I-26 Corridor in South Asheville - 15 miles from downtown Asheville - the Asheville Regional Airport (AVL) is an ideal choice for commercial development.
- AVL is uniquely positioned with infrastructure in place or readily accessible and up to 65 acres with direct taxi-way service for future aeronautical development and an additional 25 for commercial (non-aeronautical) use.
- Long-term land lease and build-to-suit opportunities are available.



Electrolux

I-26

20
ACRES

Linamar

FedEx

Sierra Nevada

45
ACRES

25
ACRES

- AERONAUTICAL ACREAGE
- NON-AERONAUTICAL ACREAGE

Approximate dimensions and locations

NONSTOP FLIGHTS



Serviced by 6 National Airlines

American, Delta, United, Allegiant, JetBlue and Sun Country

*Subject to change;
new flights will continue to be announced*

26 NONSTOP FLIGHTS

- Easy domestic and international air access
- Frequent daily flights, including to eight international hubs
- 26 nonstop destinations and 60-70 flights per day

INTERNATIONAL ECONOMIC DEVELOPMENT COUNCIL



Accredited Economic Development Organization

The Economic Development Coalition (EDC) for Asheville-Buncombe County is a public-private partnership committed to creating and retaining high quality jobs, community leadership, and being a resource for better business decisions. The EDC accomplishes this mission through its four core services: Business Retention and Expansion, Small Business and Entrepreneurship, Research, and Marketing and Recruitment.

ADDITIONAL SOURCES: US BEA, US Census Bureau, US DOT, NC Department of Commerce, Lightcast, Greater Asheville Regional Airport Authority

PLEASE CONTACT US

CLARK DUNCAN | Senior Vice President of Economic Development
828.258.6134, cduncan@ashevillechamber.org

KEEVON BATEN | Director of Business Recruitment
828.258.6128, kbaten@ashevillechamber.org

COMPILED BY



ECONOMICDEVELOPMENTASHEVILLE.ORG

Last Updated: April 2023